

## SPECIFICATIONS

**Graphic Panel Size**  
A1 [841mm x 594mm]

**Visual Area**  
814mm x 577mm

## SYSTEM SIZES

**Assembled size**  
1215 [h] x 740 [w] x 610mm [d]

## Boxed size

Box 1 = 1255 [h] x 775 [w] x 90mm [d]  
Box 2 = 750 [h] x 620 [w] x 160mm [d]

## WEIGHTS

**Assembled weight [without water]**  
20kg

**Assembled weight [with 30 litres of water]**  
50kg

## Boxed weights

Frame = 21.6kg  
Base = 3.4kg  
Total Boxed Weight = 25kg

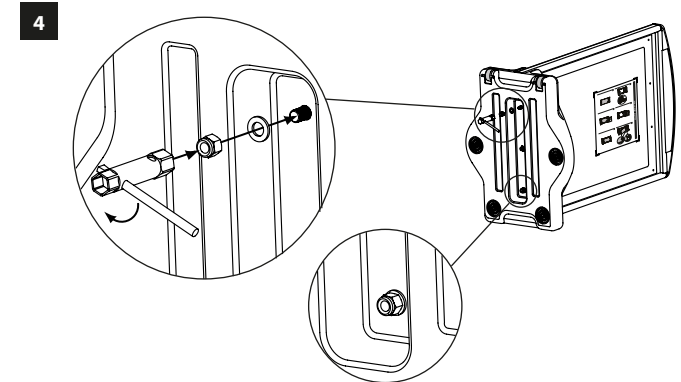
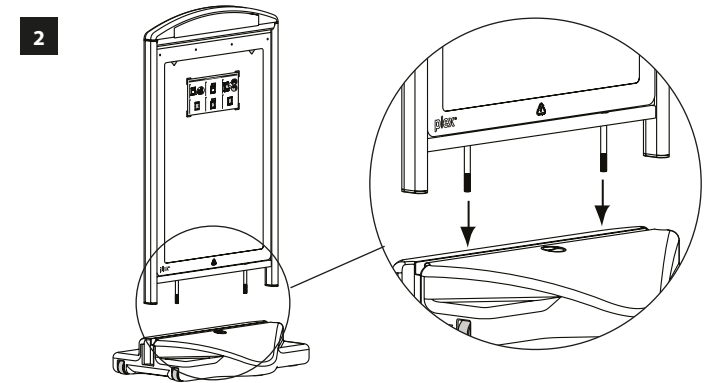
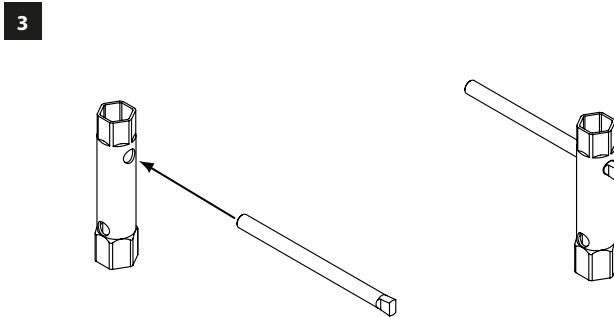
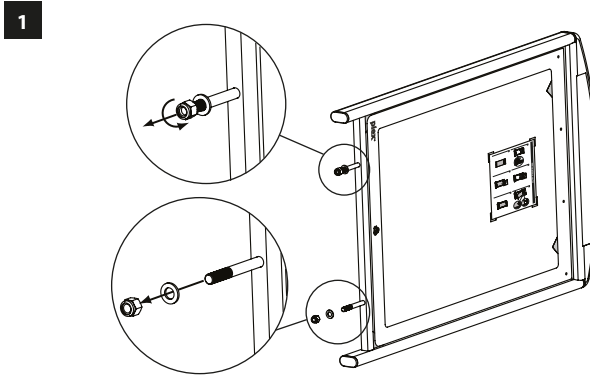
## BASE CAPACITY

30 litres [1 litre weighs 1kg]

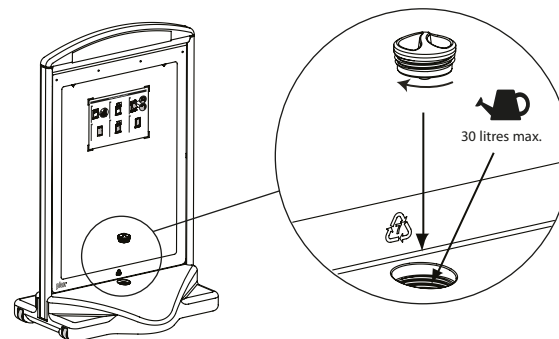
## COMPONENT LIST

- 1 off – Frame assembly
- 1 off – Plastic base
- 2 off – M12 nut
- 2 off – Washer
- 1 off – Box spanner
- 1 off – Filler cap

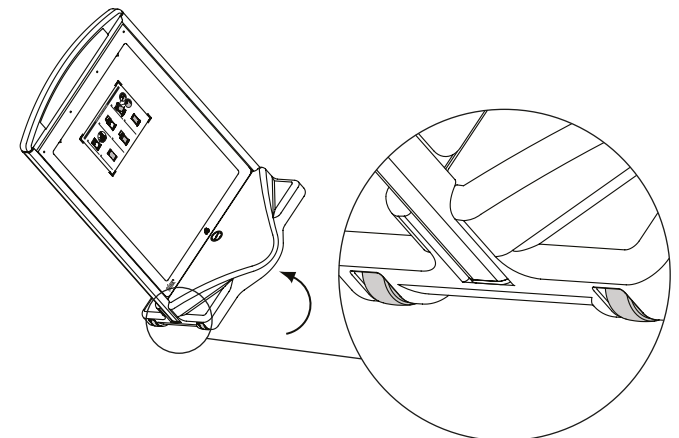
## A1 ASSEMBLY INSTRUCTIONS



## FILLING WITH WATER



## WHEELING INTO POSITION



**N.B.** 1.5kg of refined salt is included inside base to prevent the water freezing.