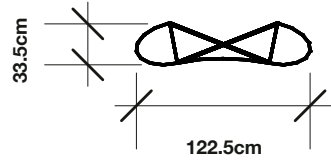


# Magnetic Pop Up Stand Frame Plan View

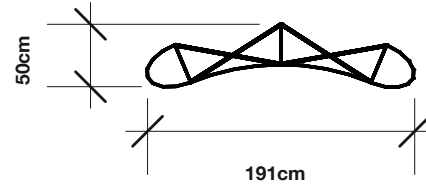
VERY Portable Graphic Display & Exhibition Stand Systems and Banner & Literature Stands  
promoting Brands & Corporations world wide

Floor Guide

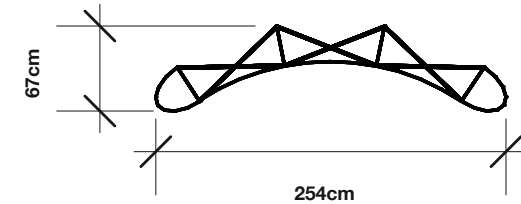
Curved



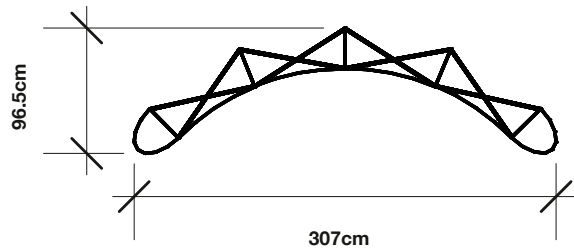
1-wide



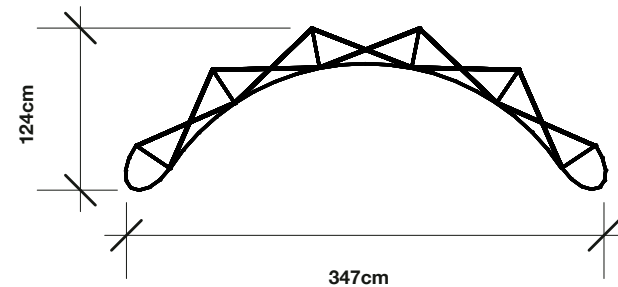
2-wide



3-wide

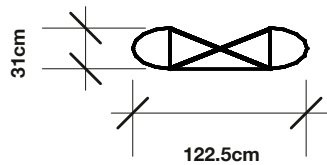


4-wide

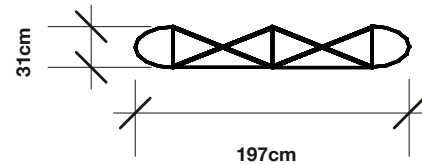


5-wide

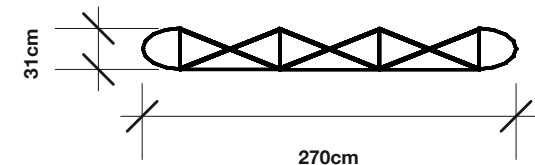
Straight



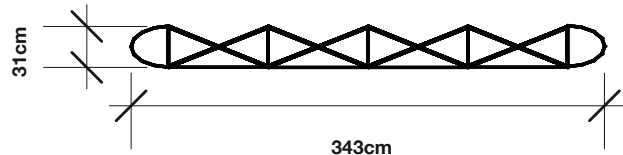
1-wide



2-wide



3-wide



4-wide

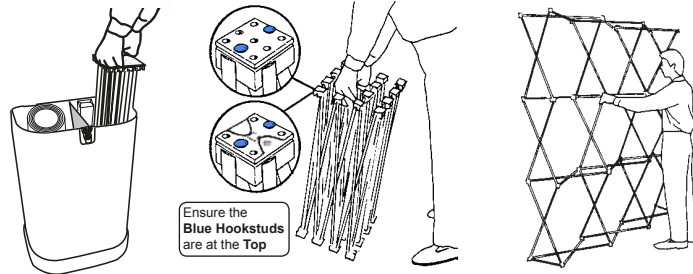


5-wide

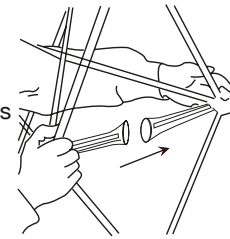
## VERY Portable Graphic Display & Exhibition Stand System

## User Guide

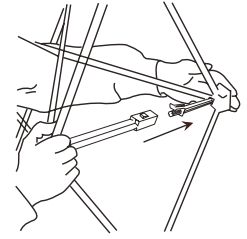
### 1 Assemble Frame with blue hookstuds at the top



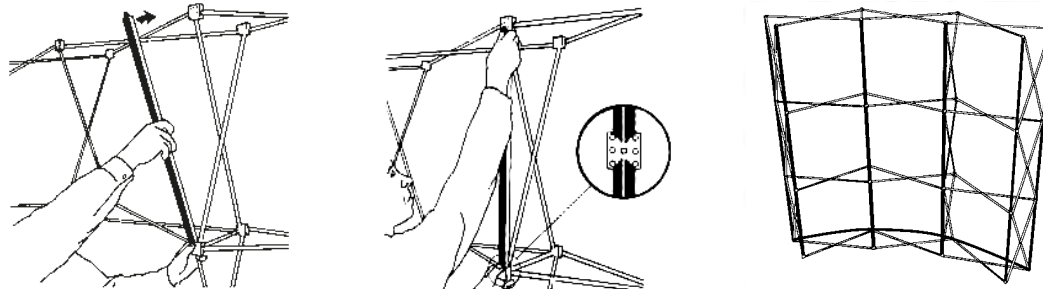
Push the locking bars together until they attach



Push the locking arms together until they "click"

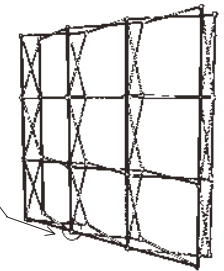


### 2 Fit Magbars

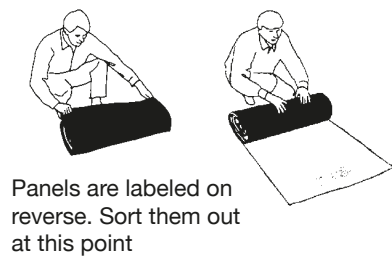


2b

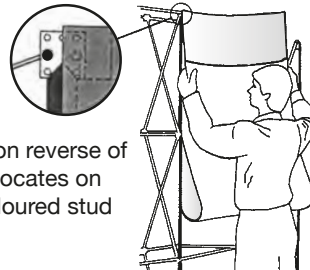
Bottom Horizontal magbars to top holes of the bottom hub on straight systems and on outside curves



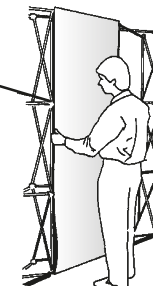
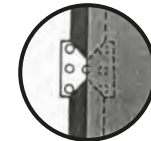
### 3 Panels



Hook on reverse of panel locates on the coloured stud



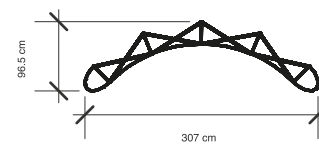
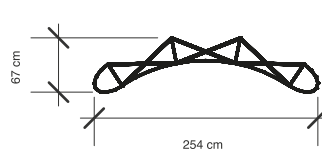
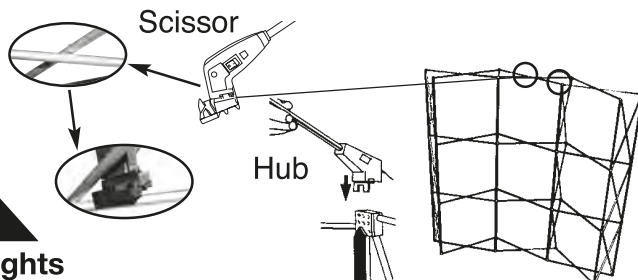
Align panel edges down centre of magnetic bar



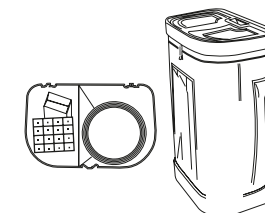
End panels curve from front to back



### 4 Lights



### PANEL PACKING IN



Roll 1 panel only graphics side out and place inside case. Once inside, unroll to touch the sides. Repeat with more panels. Reverse procedure to remove panels from case. Other components are stored in the remaining space available.