

SPECIFICATIONS

GRAPHIC PANEL SIZES

Finished Graphic Panel Size

2200 (h) x 1200/1000/850/800/600 (w)mm
(includes 200mm bleed)

Visual Graphic Size

2000 (h) x 1200/1000/850/800/600 (w) mm
(Please note – 10mm of graphic hidden by top gripping hanger)

SYSTEM SIZES

Assembled Size

1200mm – 2090 (l) x 1215 (w) x 383 (d)mm

1000mm – 2090 (l) x 1015 (w) x 383 (d)mm

850mm – 2090 (l) x 865 (w) x 383 (d)mm

800mm – 2090 (l) x 815 (w) x 383 (d)mm

600mm – 2090 (l) x 615 (w) x 383 (d)mm

Boxed Size

1200mm – 1260 (l) x 115 (w) x 100 (d)mm

1000mm – 1060 (l) x 115 (w) x 100 (d)mm

850mm – 910 (l) x 115 (w) x 100 (d)mm

800mm – 870 (l) x 115 (w) x 100 (d)mm

600mm – 660 (l) x 115 (w) x 100 (d)mm

BOXED WEIGHTS

1200mm – 4.0kg

1000mm – 3.5kg

850mm – 2.9kg

800mm – 2.8kg

600mm – 2.3kg

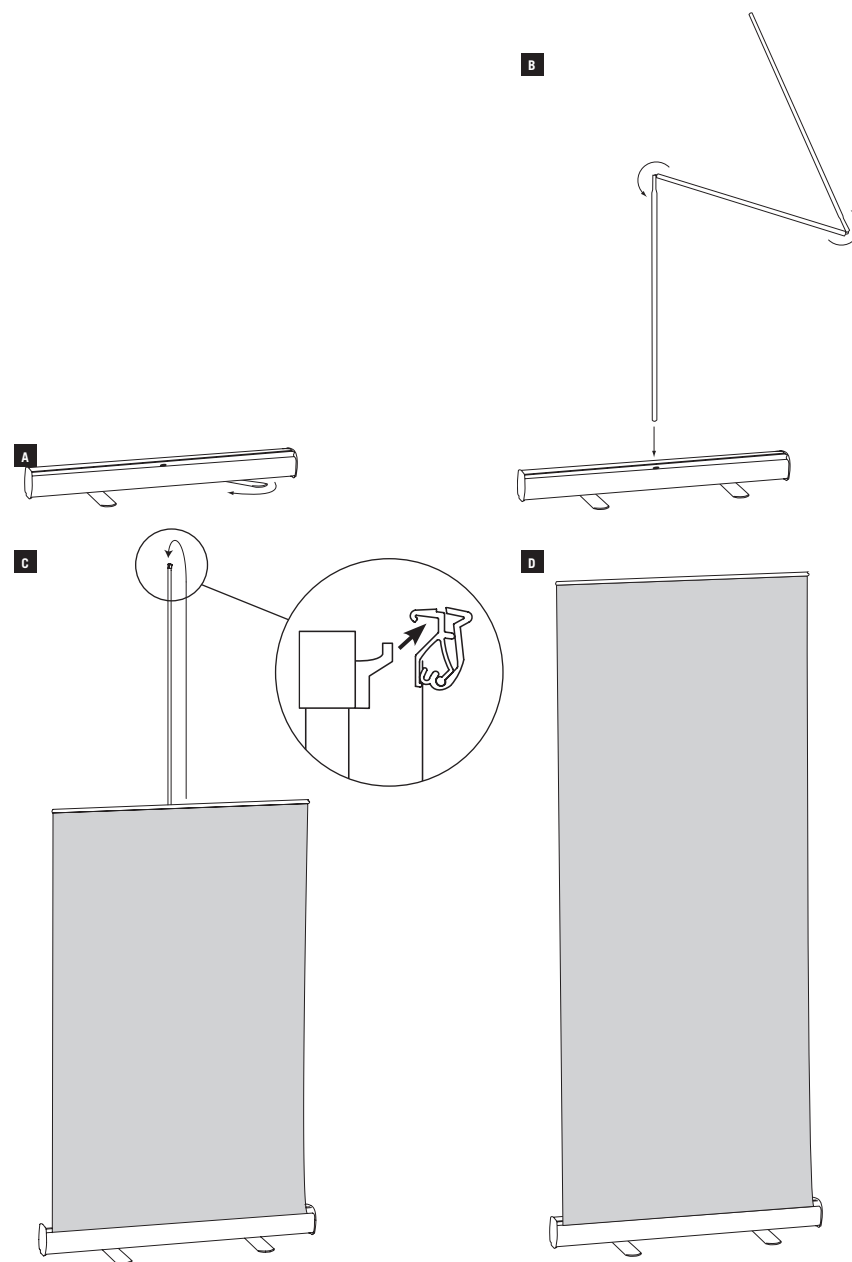
NOTE: Please test your substrate suitability before use.

COMPONENT LIST

- 1 off Neo unit
- 1 off 3 part bungeed pole
- 1 off Gripping hanger
- 1 off Padded carry bag

plex

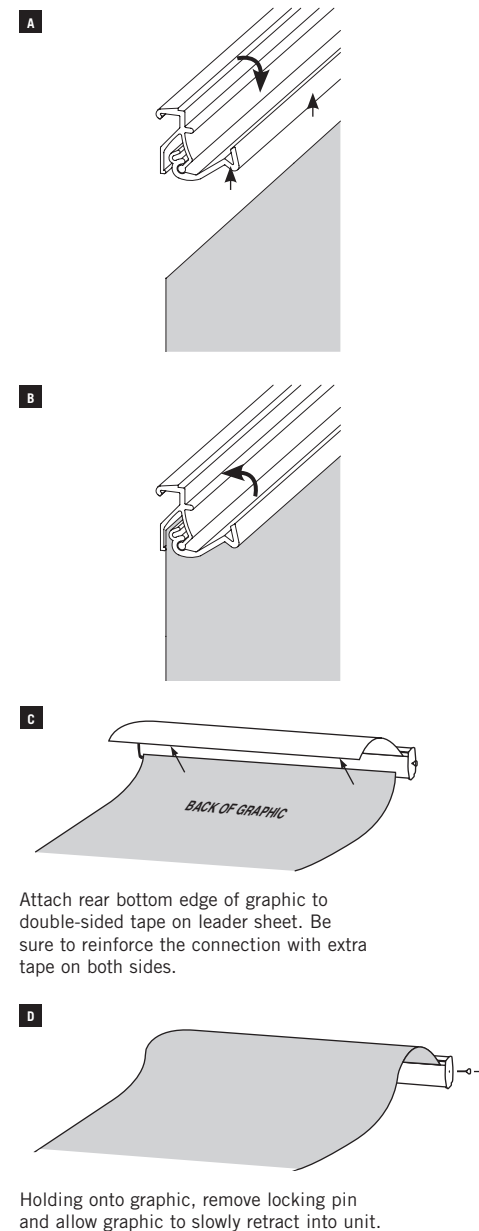
NEO – ASSEMBLY INSTRUCTIONS



IMPORTANT NOTICE:

When retracting a graphic always slowly guide it into base housing, otherwise graphic damage may occur.

NEO – GRAPHIC ATTACHMENT



IMPORTANT NOTICE:

To ensure a proper bond between graphic and double-sided tape/ hook fastener, pressure must be applied. The adhesive should be allowed to cure for 24 hours before use.